

ES2 / ES3 USER MANUAL



Thank you for purchasing a Golfscootz Electric Scooter.

Please carefully read the specifications in this manual and conduct a complete inspection of the scooter. This manual serves to instruct you how to assemble and operate your new ES2 or ES3 golf eScooter.

Operating the scooters is straightforward and will not take you long to learn.

However, we strongly suggest you follow these instructions carefully.

There are many photos to guide you along as well as detailed information to make learning and operating easy!

Refer back to this manual often for instructions on how to complete the assembly, riding and safety instructions and properly maintaining your Golfscootz Electric Scooter.

TABLE OF CONTENTS

3	ES2 assembly instructions
4	ES2 unpacking
7	Installing the esky tray
9	Installing the seat
10	Installing the front handlebar
11	Installing the reversing mirrors and front indicators
12	Installing the rear golf bag kit
13	Completing the assembly
14	Overview of the scooters
15	Introduction and notes
16	Golfscootz specifications
17	Charging the battery
18	Controls and operation of the scooter
21	Warranty
21	Maintenance
22	Terms and conditions
25	Return policy

ES2 ASSEMBLY INSTRUCTIONS



This part of the manual will instruct you on how to assemble your new ES2 Golfscootz eScooter.

The assembly is quite easy as most has been already done at our factory.

However, we strongly suggest you follow these instructions carefully.

Please make sure you follow and complete each step, and do not skip forward.

There are many photos to guide you along as well as detailed information to make the process easy and without mistakes.

UNPACKING THE ES2 eSCOOTER

DELIVERY CARTON



Using a box cutter knife, cut the tape along all 4 x sides on the bottom of the carton.

We **DO NOT** recommend cutting the carton open as you may damage the eScooter.

Then lift off the carton and put to one side.

ES2 IN STEEL CRATE WITH FULL PROTECTIVE PACKING



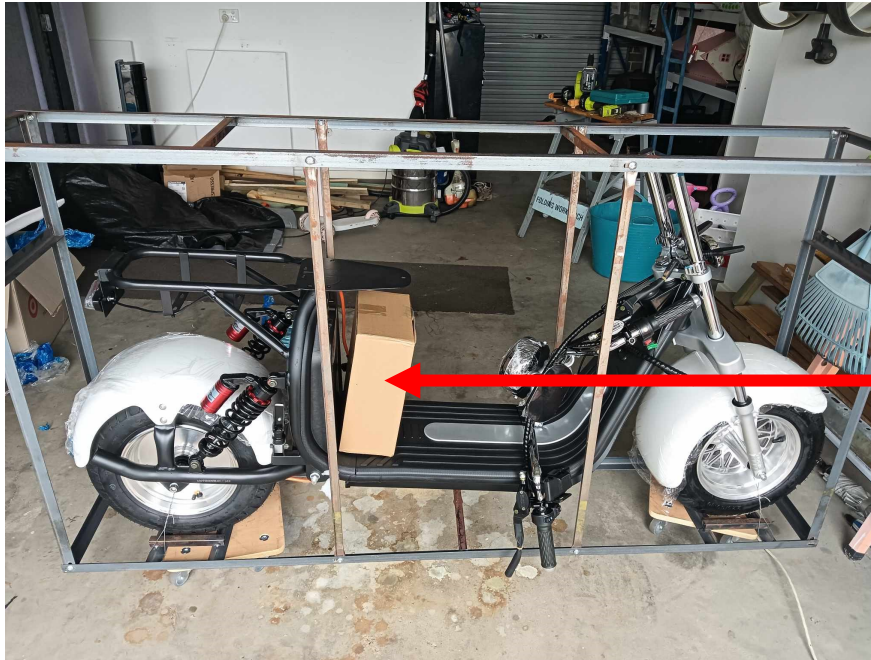
The ES2 is protected by a combination of foam and plastic wrapping.

Cut all the wrapping using the knife **VERY CAREFULLY** so you don't damage the scooter and / or cut any electrical wires.

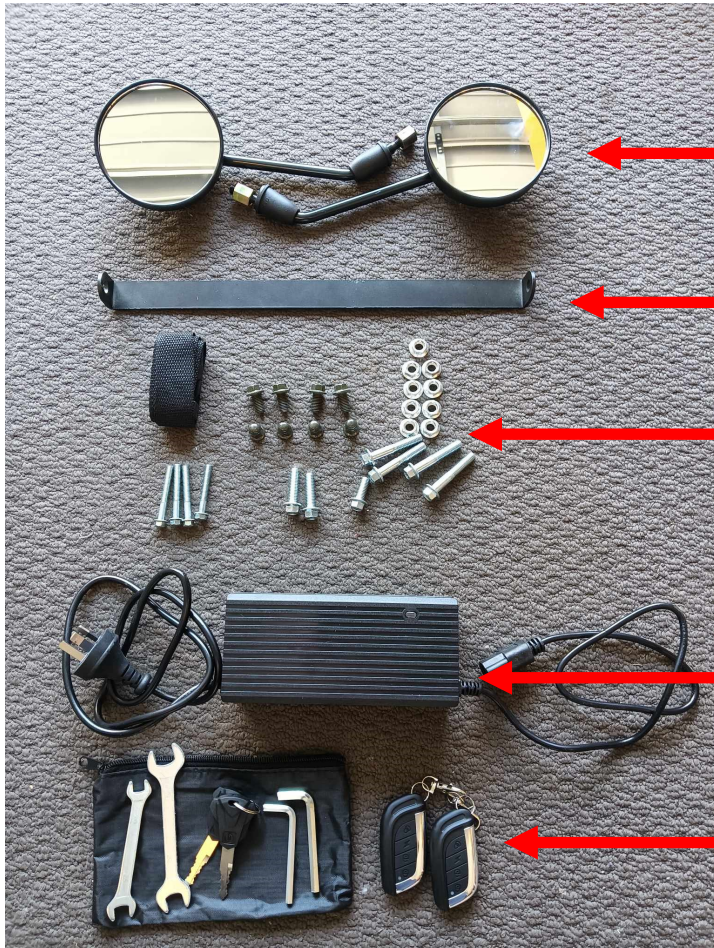
We recommend to cut vertically and very slowly.

Remove all internal packing and set to the side.

ALL SUPPLIED ITEMS



ACCESSORIES BOX



CONTENTS OF ACCESSORIES BOX

REAR VISION MIRRORS

ESKY TRAY BRACKET

VARIOUS NUTS AND BOLTS

BATTERY CHARGER

TOOL KIT AND REMOTE KEYS



ESKY TRAY + GOLF BAG KIT

SCOOTER WITH INTERNAL PROTECTIVE WRAPPING REMOVED



After cutting some more plastic wrap, remove the esky tray and golf bag bracket and put to one side.

ESKY TRAY + GOLF BAG KIT



CAREFUL: It's very easy to scratch these components with the knife.

REMOVING THE TOP OF THE STEEL CRATE



Using the supplied 10mm spanner and allen key, remove all the top bolts (12) from the crate. The bolts will be very tight, so we recommend to hold the top of the bolt with the allen key and then loosen the inside nut with the spanner until it is quite loose. (Sometimes the top of the bolt can burr). Once loose, turn the allen key to easily undo the entire nut and bolt.

After removing 12 bolts, lift off the top of the steel crate and put to the side
Now remove the bottom 12 bolts in the same manner. Remove the front, rear and 4 x middle steel brackets and put to the side.

The scooter is attached to the bottom of the crate via 4 x steel wires on the wheels. **DO NOT** cut these wires yet and leave the scooter attached to the steel crate for now.



INSTALLING THE ESKY TRAY

Remove the 2 x bolts holding the rear tail light.



Allow the tail light to rest on the rear fender.



Unwrap the esky tray and put it in place making sure the rear lip is aligned with the tail light holes.

Align the front centre hole and attach using a short 10mm nut and bolt



Now re-attach the rear tail light using the 2 x tail light bolts you removed earlier making sure the bolts go through both the tail light bracket and esky tray. NOTE: There are no nuts to use here, just tighten the bolts.



INSTALLING THE SEAT

The seat has 3 x fixed bolts underneath.



Place the seat into position making sure all 3 x bolts protrude through. Then use 3 x 10mm nuts to secure and tighten.



Make sure all bolts for the esky and seat are tight to complete the installation



INSTALLING THE FRONT HANDLEBAR

The front handlebar is packed in the footwell of the scooter.

**DO NOT DISCONNECT
ANY CABLES OR WIRES.**



Gently pull up and spin the handlebar 180 degrees and slide it into position over the bottom forks. Make sure the bottom forks **ARE FLUSH** with the top fork bracket.

LEFT FORK BRACKET



RIGHT FORK BRACKET



Tighten each bolt firmly but do not overtighten them.

Watch the video by using this link.

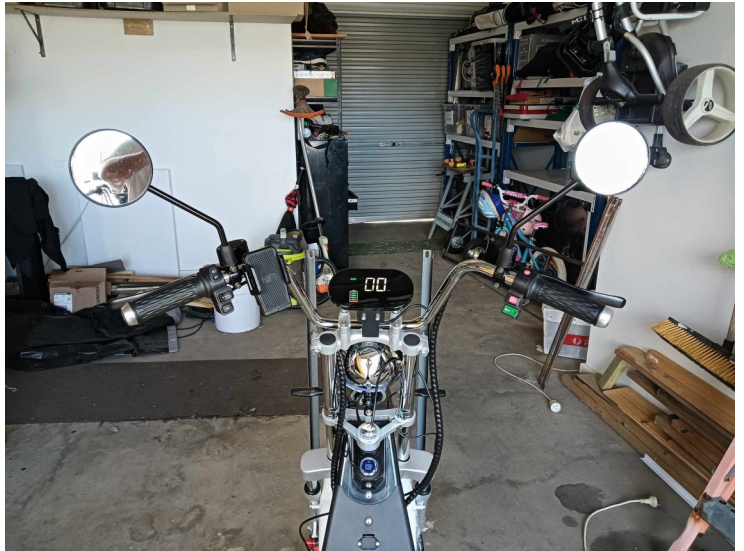
<https://www.youtube.com/watch?v=EibORnR15Wc>

INSTALL THE REAR VISION MIRRORS

Locate the rear vision mirror sockets on both sides of the handlebar. Install the supplied mirrors by hand screwing them into place. The mirrors have a brass nut on the thread so you can adjust it, then slide the rubber cover over.



COMPLETED HANDLEBAR INSTALLATION



UNFOLD THE INDICATORS

Locate the front turn indicators . They will be folded in. Gently unfold them (loosen the screw a little if necessary) out to be 90 degrees to the forks. (Tighten the screws if you loosened them) Now rotate them up or down if necessary.

INDICATOR FOLDED



INDICATOR EXTENDED



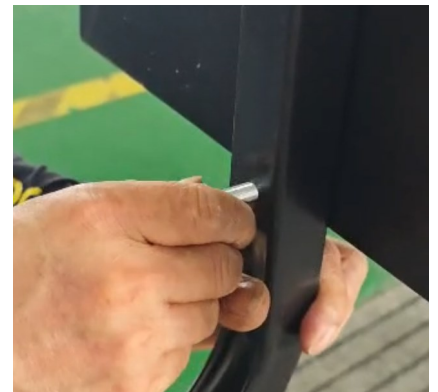
INSTALL REAR GOLF BAG KIT

Unpack the supplied golf bag kit.



Attach the support pole using 2 x nuts and bolts. Make sure the vertical support pole is in the correct orientation.

Then follow these steps to complete the install.



Use this link to watch a video of the esky and golf bag holder installation.

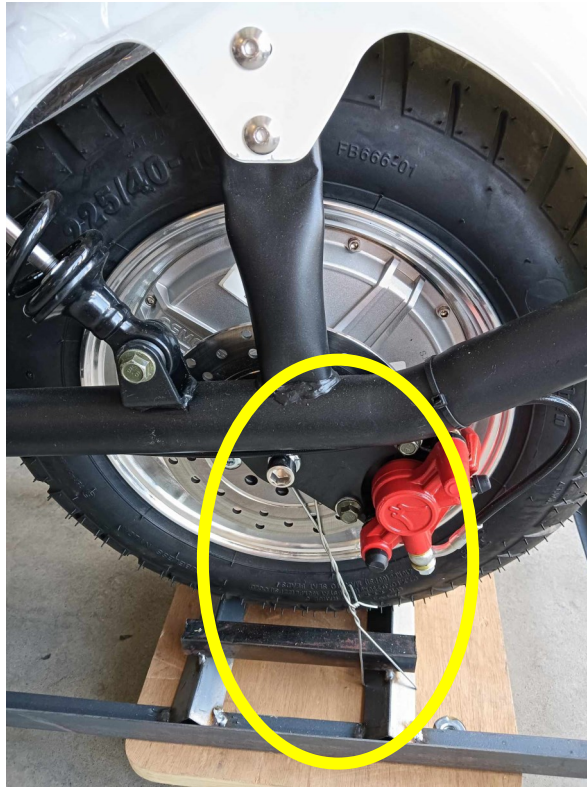
<https://www.youtube.com/watch?v=idgFweBhipY>

The golf bag installation begins at 1.40 in the video

REMOVING THE SCOOTER FROM THE CRATE

You can now remove the scooter from the steel packing crate.

Cut and remove the 4 x tie wires using plyers. There is one wire each side of both wheels.



Now roll the scooter off the crate bottom. We suggest to roll the scooter backwards.

Release the footrest with your foot (it is the front wheel to go, and gently rest footrest.



by pushing it down sprung loaded), turn the left as far as it will the scooter on its

THE ES2 SCOOTER ASSEMBLY IS COMPLETE

TO WATCH THE ES3 TRIKE ASSEMBLY, PLEASE USE THIS LINK:

<https://www.youtube.com/watch?v=352BsEo5A98>

OR SELECT IT FROM OUR WEBSITE UNDER THE GALLERY MENU ITEM

OVERVIEW OF THE SCOOTERS

ES3 TRIKE



ES2 SCOOTER



INTRODUCTION AND NOTES

The sections in this manual on maintenance and the proper operation of your scooter will help you become familiar with the scooter's function and controls. Any improper operation may damage your scooter, increase significant risk in bodily harm and void the warranty.

The actual scooter may be slightly different from the specifications due to continuous improvements and updates in product technology. Please carefully read and observe the contents within this operating manual to ensure your safety and proper scooter maintenance.

1. Before riding your scooter, please carefully read this operating manual and thoroughly inspect the scooter to ensure your safety. If any issues are found, please contact us immediately at support@golfscootz.com.au
2. Comply with all the local traffic laws and exercise caution when operating your scooter. All Golfscootz scooters are sold on the basis of **golf course use only**. If you suffer any infringement, damage or injury to yourself or any other person/s by riding a Golfscootz eScooter, either on the road, footpath, private property or golf course, you are completely liable and Golfscootz takes no responsibility.
3. BE PATIENT while learning to operate your scooter. Exercise caution, reduce your speed and allow sufficient braking distance when stopping the scooter, particularly when operating the scooter in poor weather conditions such as in rain or any slippery surface.
Operating in light rain may not necessarily damage the scooter but be careful not to submerge the scooter. If the rear wheel motor hub is submerged in water, the scooter may short circuit and cause permanent damage to the electrical equipment. Do not exceed the carrying capacity of your scooter, which is rated at 150kg for the ES2 model and 180Kg for the ES3 model.
4. Do not disassemble the battery and motor.
5. For your safety and the safety of others, your scooter should only be operated by those who have thoroughly read and understand this operating manual prior to operating the scooter. Should your scooter go several weeks without use, simply charge the battery back to full before use and then continue charging as normal. See maintenance and storage sections for more detailed instructions.

GOLFSCOOTZ SPECIFICATIONS

- Scooter dimensions: ES2—1810*810*1160mm, ES3—1810*1350*1160mm
- Weight of scooter: ES2—85kg, ES3—102Kg
- Seat height: 750mm
- Max load: 150kg
- Tyre specifications: 225/55-8, 31N. Do not pump the tyres more than 30PSI
- Designed maximum speed: 25kmh
- Range per charge: 60-100km *
- Max slope: 20deg
- Brakes: Hydraulic disk brakes, front and rear
- Braking performance at max speed of 20kph:-
Braking in the dry 1.5m,
Braking in the wet 3.5m
- Battery: Lithium, 20ah, 60v
- Charging time: Up to 8 hours depending on the current battery charge
- Motor: Brushless direct current hub motor
- Charger specifications: Input voltage (AC): AC100—240V, 50/60Hz
 Output voltage (DC): 67V, 2.0A

OPERATING THE SCOOTER

CHARGING THE BATTERY

The battery is installed in an upright position under the seat. It may not be connected at this time.

You can charge the battery while it is mounted or you can remove it to charge it in a more convenient location.

To remove the battery, make sure it is NOT connected via the orange cable, use the key to unlock it, and tilt the battery forward by the top handle to remove it

BATTERY INSTALLED



BATTERY REMOVED



Plug the supplied charger into the powerpoint and make sure the powerpoint switch is in the OFF position. Connect the battery to the charger. Once connected, turn the powerpoint on at the wall.

You will see the red light on the charger, This tells you the battery is charging.

For 1st time charging, make sure you leave the battery charging until the charger light turns to green. This may take 4-5 hours.

Continue to monitor the charging status and disconnect the charger once you see the green light.

DO NOT leave the charger connected and **DO NOT** overcharge the battery.

As with all lithium batteries, **NEVER** leave the battery on charge and unattended.

CONTROLS AND OPERATION

GETTING STARTED


- **LOCK:**

When the scooter is OFF, press the Lock button on the key fob to arm the alarm and lock the scooter. When the scooter is on this state, any attempt to move or roll the scooter will activate the in-built alarm siren.

- **UNLOCK:**

When the scooter is OFF, press the Unlock button on the key fob. This will activate the scooter during which time the scooter can be freely rolled and the push-to-start button becomes operable.

- **DISABLE ALARM:**

To disable the alarm, press the  button on the key fob.

- **START:**

In order to initiate start, the scooter must be unlocked using the key fob. Once the scooter is unlocked, press the push-to-start button on the scooter. You will hear a beep and the button will illuminate.

- **STOP:**

To turn the scooter off, press and hold the push-to-start until you hear a double beep

- **BRAKING:**

There are brakes on both sides of the handle bar. The left lever is the rear brake and the right lever is the front brake. Squeeze the brake levers slowly at all times and allow plenty of distance to brake.



- **ACCELERATE:**

When you are ready to ride, release the footrest on the left side bottom of the floorboard by pushing it backwards with your foot (it is spring loaded), and place both feet on the ground to keep the scooter steady.

For the EC3 model, there is no footrest. Just place both feet on the floorboard. **SLOWLY** twist the throttle toward you while keeping your left fingers **on the brake handle, ready to brake**. Drive a very short distance and apply the left brake lever. Do this 2-3 times until you get familiar with the throttle and braking. Be a little careful as the scooter can accelerate quickly!

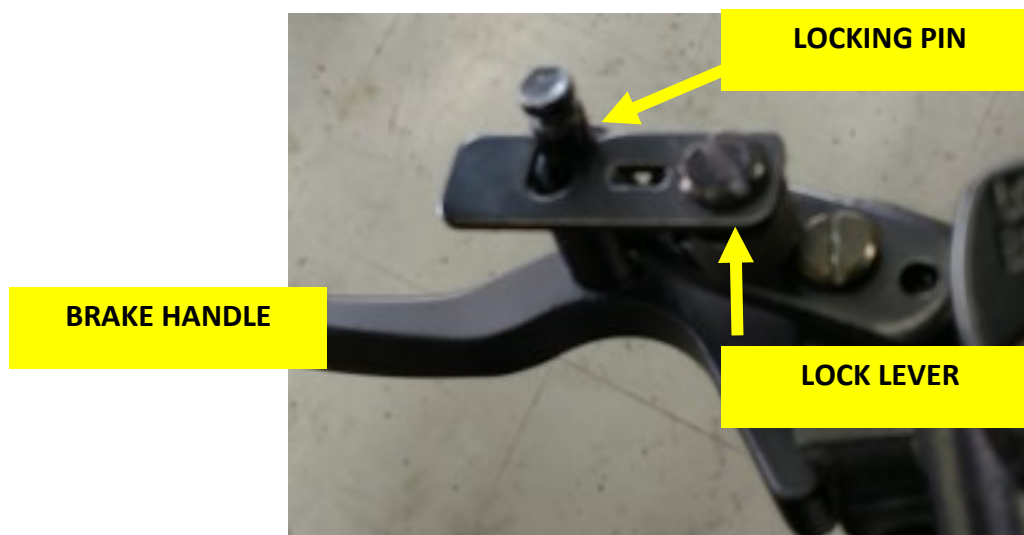
NOTE: If you apply and hold the left brake lever, the throttle will not work. This is a safety feature.

- **PARK:**

1. Turn the scooter off by pressing and holding the Start button
2. Step off the scooter
3. Leave the scooter on flat stable surface and **engage the kickstand**
4. Turn the handlebar to the left as far as it will go and rest the scooter on the kickstand

EC3 MODEL ONLY:

The EC3 trike can roll due to its 3 wheel design. Engage the brake lock by pulling in on the left brake lever and push down the locking pin and slide the lock lever. To release, simply pull in the lever and release the locking tab.

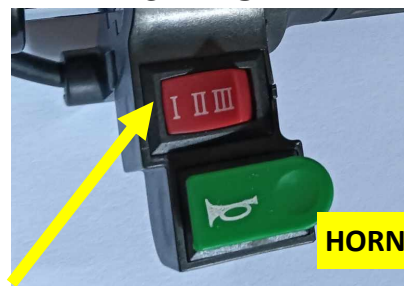


- HANDLE BAR CONTROLS:** Use the switches below to control the scooter:

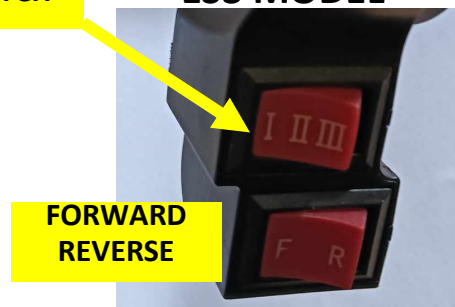
ES2 AND ES3 MODEL



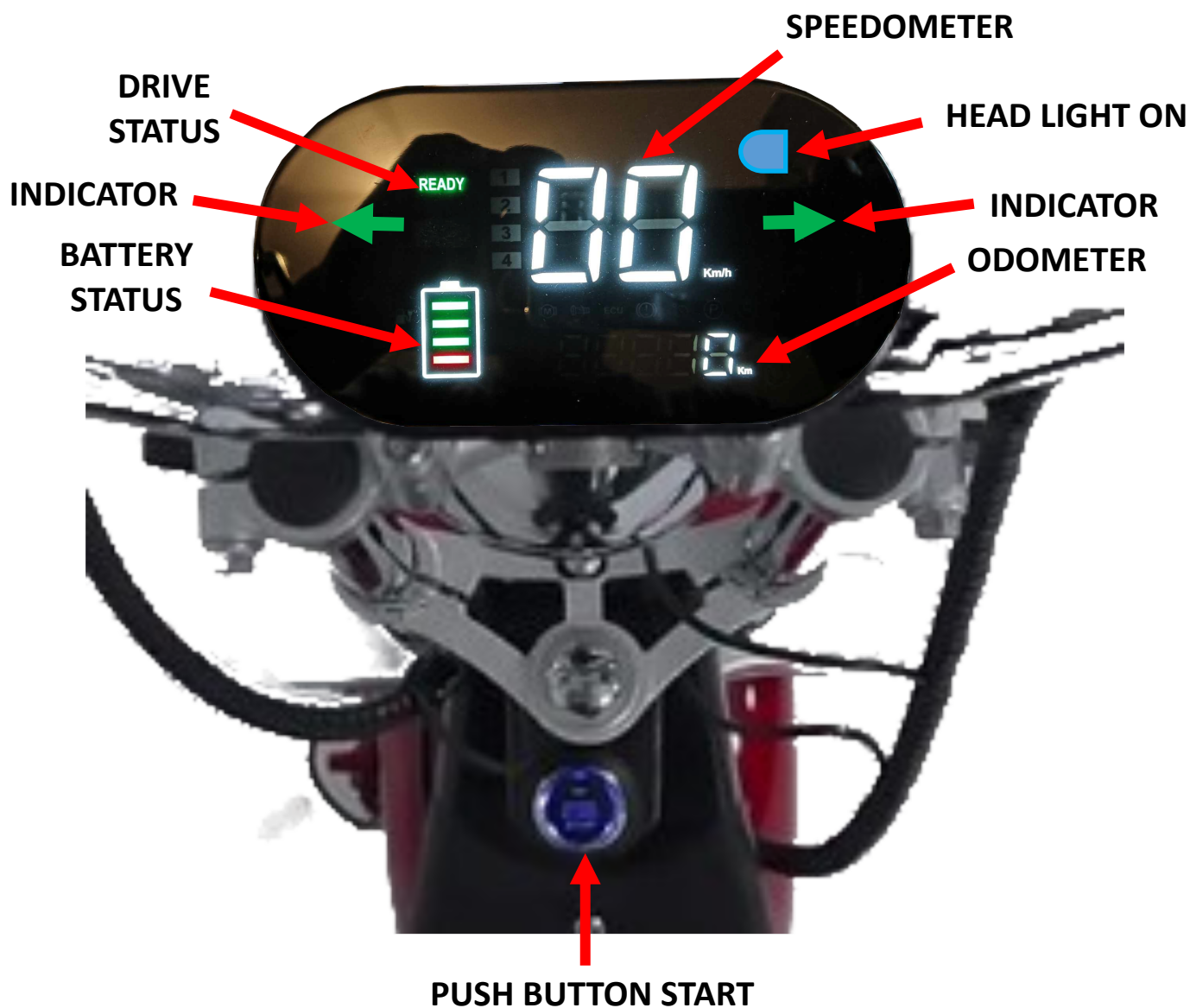
ES2 MODEL



ES3 MODEL



LCD DISPLAY WITH KEYLESS PUSH BUTTON START AND ALARM



SAFETY TIPS

1. Always pay attention to your surroundings. Make sure you are comfortable with the throttle and hand brakes before going out of the course
2. **DO NOT** put multiple people on the scooter
3. **BE CAREFUL WITH YOUR SPEED.** Avoid sharp turns and use your brakes when going downhill to avoid excessive speed



Always ride straight up and down hills to avoid tipping or rollover. Do NOT ride sideways on hills. Maintain a controlled speed on downhill riding and avoid quick turns.

Warranty

Golfscootz scooter warranties all parts against manufacturers defects for a period of ONE year from delivery and is valid for ordinary consumer use only.

Golfscootz will, at their discretion, replace or repair any item found to be defective, including:

- Motor
- Controller
- Battery
- Throttle
- Handlebar switches
- Brake Calipers and Master Cylinders
- Bag holder and attachment brackets
- Aluminum esky tray

NOTE: Wear items such as tires, brake pads, rubber parts, seat fabric and cushions, cooler, sand bottle, light bulbs, etc. are NOT included. Labor costs are NOT covered by warranty and ANY DAMAGES OR DEFECTS OCCURRING FROM THE MISUSE OF THE SCOOTER ARE NOT COVERED. Warranty starts from the time scooter is delivered to your home or facility. For repairs, tune ups, and adjustments, please visit your local bike or repair shop.

MAINTENANCE

Regular Maintenance and Self-Inspection Checklist:

- Are the bolts of the front and rear wheel/s tight?
- Is the tread of the tire worn or are there any holes or leaks in the tires?
- Ensure proper tire pressure on both tires. Recommended front and rear tire pressure is maximum of **25PSI**
- Is the front screen cable connected?
- Charge the battery regularly (at least every 6 to 8 weeks)
- Check that the front and rear wheel shafts are not loose

Breaking-In Period: The breaking-in of the disc brakes will take some time. After they are broken in, the braking force will be increased. During the breaking-in period, the brakes should not be used with excessive force as it will cause permanent damage to the brakes and brake pads. The correct operation of the brake is to ride normally with moderate friction between brake pad and brake disc.

Replace Brake Fluid: Brake fluid should be replaced every 2 to 3 years or if the brake lever starts to feel spongy. Use brake fluid **ONLY**. The brake parts should never be filled with oil as this will cause brake failure.

TERMS AND CONDITIONS

General Terms of Sale: This is a contract between Golfscootz (“Seller”) and you, and by purchasing a Golfscootz Scooter you accept and agree to be bound by this agreement. These terms and conditions will govern the sale notwithstanding any inconsistent terms in any other purchase order, invoice, contract, or other subsequent writings.

Warnings and Proper Usage: A GOLFSCOOTZ Scooter is a battery-powered motorized scooter that is intended and sold (to you) on the basis to be used solely for the purpose of golf course use, and under certain environmental and operating conditions, as further described here. You agree that you will use the GOLFSCOOTZ Scooter only in the manner and under the conditions described here, and that you will avoid using it in a manner that is obviously inadvisable, or under hazardous conditions, or under any other conditions for which Seller has issued warnings. Never place anything other than your feet on the floor-board. Never place your hands or feet anywhere in or near the wheels. Do not wear loose fitting clothing, or ankle or shoe jewellery. Always face forward while operating.

You agree to follow and obey all operating requirements and procedures of GOLFSCOOTZ Scooters.

Operating Limits/Requirements: GOLFSCOOTZ Scooters are designed to work solely with single riders. GOLFSCOOTZ® Scooter’s maximum carrying capacity is 150Kgs, including the rider, esky and golf clubs. GOLFSCOOTZ® Scooter’s controls limit it to a top operation speed of 25 kph. GOLFSCOOTZ® Scooter is designed and intended for persons 18 years and older. GOLFSCOOTZ Scooters are not a toys. Persons under the age of 18 should not ride or operate it.

Owner’s Manual: The operator of GOLFSCOOTZ Scooters must read this owner’s manual that is included with it when delivered, before attempting to operate it. Please refer to the owner’s manual for battery charging and care and maintenance information. Brake smoothly and allow sufficient braking distance. Use caution when operating near other cyclists or pedestrians. It is **illegal** to operate a GOLFSCOOTZ Scooter on highways, roads, streets or footpaths .

TERMS AND CONDITIONS (cont)

Low Power: GOLFSCOOTZ Scooter's systems require sufficient battery power. Do not use if a low power condition is indicated on the front control screen, or if you are aware that GOLFSCOOTZ Scooter requires recharging.

Modifications: GOLFSCOOTZ Scooters are designed to function solely in accordance with its specifications. Do not modify it in any manner, as doing so could cause it to malfunction, cause injury or damage and will void warranty.

Avoid Hazards: Use caution and reduce speed when using GOLFSCOOTZ Scooters in rainy, icy, or snowy conditions, or in other conditions where you could lose traction.

GOLFSCOOTZ Scooters are not intended to be, and should not be used as, an "off road"-type vehicle or on uneven roads, or as a dirt bike, or for motocross-related activities. Always ride at a speed that is safe for you and others who are around you.

No Drugs/Alcohol: Never use GOLFSCOOTZ Scooters while you are under the influence of drugs or alcohol. Never use GOLFSCOOTZ Scooters unless you can focus your entire attention on operating it in a safe manner. Do not operate GOLFSCOOTZ Scooter while talking or texting on a mobile phone or other electronic device.

No Towing: GOLFSCOOTZ Scooters are not intended to, and should never be used to, tow or pull any vehicle, bicycle, or pedestrian. Doing so can cause damage to the GOLFSCOOTZ Scooter, and places others in serious danger.

Risk of Injury – Assumption of Risk: Whenever you use GOLFSCOOTZ Scooters, you risk death or serious injury from loss of control, collision and/or falls. Such risk exists even if it is used in complete compliance with its instructions and warnings. BY USING A GOLFSCOOTZ SCOOTER, YOU ASSUME ALL RISK OF PERSONAL INJURY, DEATH OR DISABILITY TO YOURSELF AND ANY PERSON UNDER YOUR CARE OR CUSTODY AND ANY DAMAGE TO PROPERTY.

Limitation of Liability and Disclaimer: You understand and agree that GOLFSCOOTZ Scooters have inherent/natural and unforeseen potential for risks of injury, damage or loss, that include but are not limited to injuries or damage caused by equipment, facilities, sidewalks, weather conditions, street conditions, condition of the rider, equipment, pedestrians, traffic, or the actions of other people. You agree, on behalf of yourself and any person under your care or custody, to hold the Seller and all of its officers, directors, employees and advisors free from and against any and all liabilities, costs, expenses, fees (including reasonable attorneys' fees), penalties, claims or causes of action arising from or related to your purchase, use (including any damages or injuries you or others incur), or your inability to use GOLFSCOOTZ Scooters in the correct manner as described above..

RETURN POLICY

RETURNS AND EXCHANGES: GOLFSCOOTZ Scooters does not accept returns for change of mind. GOLFSCOOTZ reserves the right to accept any returns on a case by case basis.

Any returns will be at the entire expense of the buyer for packing and shipping back to Golfscootz in Sydney. Any returns **MUST** be packed by the buyer in a manner where the scooter is safe from transit damage. After inspection, any returns will attract a 15% restocking fee. Should our inspection of the scooter show any damage, it will be assessed and you will be advised of any further reductions of refund.

After your return is received and your scooter is inspected, we'll refund your original payment (less 15% restocking fee) and send you an email confirmation that your return has been completed. Please allow up to 7 working days for the refund credit to appear on your statement.